

SURGIFLOW



What makes SURGICON different?

We believe it's our commitment to improved safety and optimal performance. Our products are designed with the belief that precision equals safety – and that safety is too important to ignore or compromise. Each one of our single-use products has been crafted to the highest standards to achieve a consistent and exceptional performance.

We want to make SURGICON the most trusted provider of precision surgical instruments in Europe, and ultimately the world.

As our range of ophthalmic instruments continues to expand, we are reimagining what the future of optical healthcare should look like.

SURGICON: Swiss innovation and smart manufacturing

SURGICON was created by experienced eyecare professionals who wanted to help ophthalmic surgeons to achieve better outcomes for their patients.

We use the latest technology to design and develop single-use surgical instruments. As a result, ophthalmologists can feel confident our single-use surgical instruments deliver value as well as reliability every time.

Based in St Gallen, within Switzerland's new Innovation Park East, and we're an innovative company combining state-of-the-art design and Development processes with a commitment to health, safety and superior craftsmanship.

SURGIFLOW

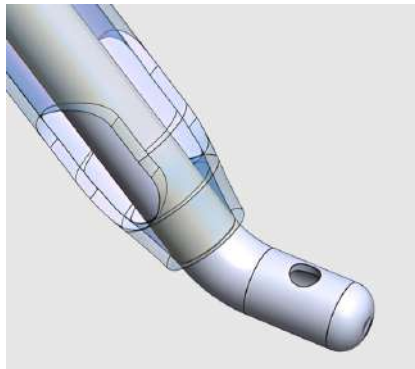
Engineered for universal compatibility, these handpieces ensure stable chamber performance across a wide range of surgical devices. With matt-finished stainless steel tips, transparent ergonomic handles, thin-wall design, and secure luer connectors, they deliver efficient irrigation and aspiration while setting a new gold standard in ophthalmic safety and reliability.

SURGIFLOW COAXIAL I/A HANDPIECES

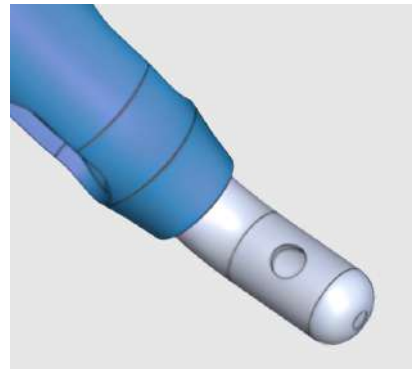


Product Code	Description	Gauge	Specifications	Qty per Box
SFCX2065	Coaxial I/A 20G - 65°	20G	Irr. 2x1.20mm, Asp. 0.35mm Textures, 65 degree Angled, 0.90mm,	10 Pc. (Sterile)
SFCX2000	Coaxial I/A 20G - Straight	20G	Irr. 2x1.20mm, Asp. 0.35mm Textures, Straight, 0.90mm,	10 Pc. (Sterile)
SFCX2045	Coaxial I/A 20G - 45°	20G	Irr. 2x1.20mm, Asp. 0.35mm Textures, 45 degree Angled, 0.90mm,	10 Pc. (Sterile)
SFCX2145	Coaxial I/A 21G - 45°	21G	Irr. 2x1.20mm, Asp. 0.35mm Textures, 45 degree Angled, 0.80mm,	10 Pc. (Sterile)
SFCX2165	Coaxial I/A 21G - 65°	21G	Irr. 2x1.20mm, Asp. 0.35mm Textures, 65 degree Angled, 0.80mm,	10 Pc. (Sterile)
SFCX2345	Coaxial I/A 23G - 45°	23G	Irr. 2x1.20mm, Asp. 0.35mm Textures, 45 degree Angled, 0.65mm,	10 Pc. (Sterile)

Irrigation sleeve



Aspiration Cannula



More Stability

Stable chamber is the foundation of safe surgery. With optimized irrigation and aspiration flow, the SURGIFLOW Coaxial I/A Handpieces maintain balance at every step.

Transparent ergonomic design, thin-wall efficiency, and precise stainless steel tips ensure control, comfort, and reliability - setting a new benchmark for consistency in ophthalmic procedures.



SURGICON AG | Lerchenfeldstrasse 3 | 9014 St. Gallen | Switzerland | info@surgicon.ch | www.surgicon.ch